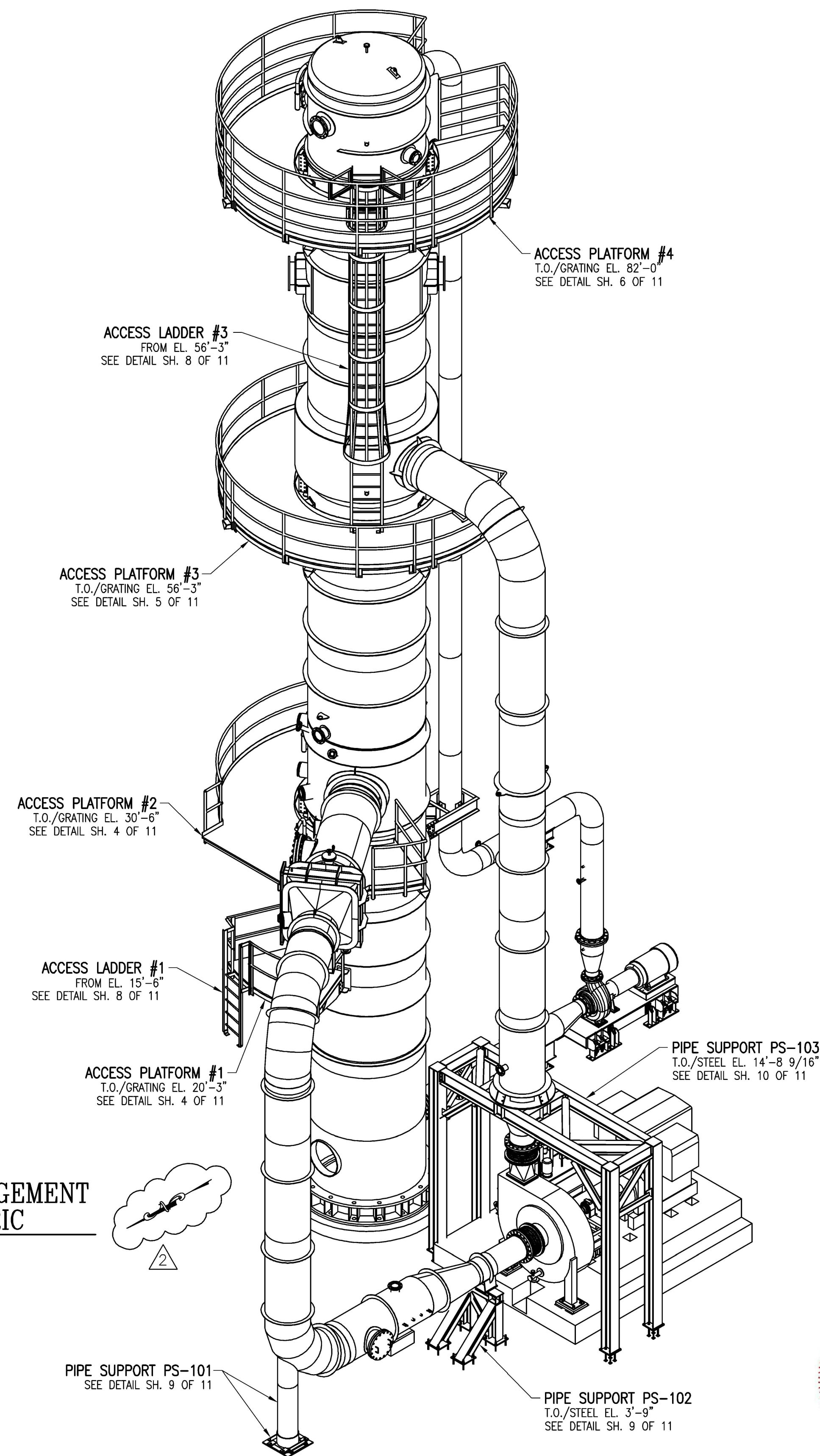
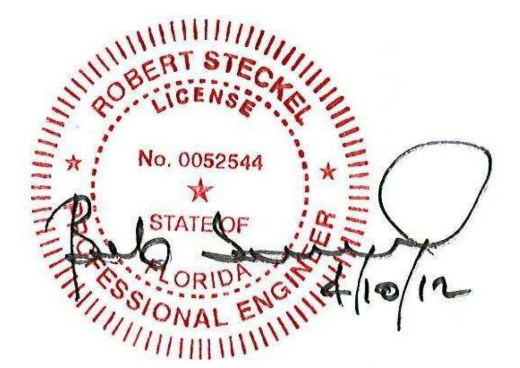


GENERAL ARRANGEMENT
SYSTEM ISOMETRIC



GENERAL ARRANGEMENT
SYSTEM ISOMETRIC

NOTE:
THIS DRAWING IS INTENDED FOR GENERAL
ARRANGEMENT AND REFERENCE DOCUMENTS
FOR THE IDENTIFIED PLATFORMS AND PIPE
SUPPORTS ONLY.



Aquatech
INTERNATIONAL CORPORATION
ONE FOUR COINS DRIVE
CANONSBURG, PA. 15317
USA

FOR INFO ONLY	SCALE						
FOR REVIEW	3/16"=1'-0"	D					
FOR APPROVAL							
CERTIFIED	1=64						
RELEASED FOR FAB							
AS BUILT							

THIS DOCUMENT IS CONFIDENTIAL AND THE PROPERTY OF AQUATECH INTERNATIONAL CORPORATION. INFORMATION CONTAINED HEREIN IS NOT TO BE EXPLOITED OR REPRODUCED IN WHOLE OR IN PART, IN ANY MANNER, AND CANNOT BE EMPLOYED FOR A PURPOSE OTHER THAN SPECIFICALLY PERMITTED IN WRITING BY AQUATECH INTERNATIONAL CORPORATION. THIS DOCUMENT IS SUBJECT TO RETURN ON DEMAND.

REVISION	DESCRIPTION	BY	DATE	DESIGN	CHECKED	APPROVED
1	ISSUED	SEI	3/9/12	FM/MB	JTD	JLM
2	REVISED NORTH ARROW	SEI	4/10/12	FM/MB	JTD	JLM

TITLE	STRUCTURAL SUPPORT, PLATFORM & HANDRAILS EXTERNAL TO VESSEL ACCESS PLATFORMS FOR BC EVAPORATOR ISOMETRICS GENERAL ARRANGEMENT
CUSTOMER	FAGEN, INC. GAINESVILLE RENEWABLE ENERGY CENTER PROJECT GAINESVILLE, FLORIDA
DRAWING NO.	P-30045-DW-MD-ICD430001-H
SHEET	2 OF 11